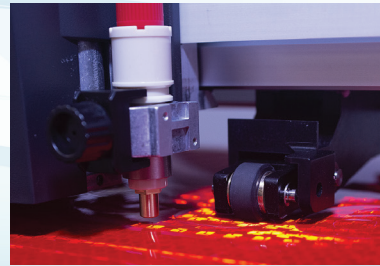
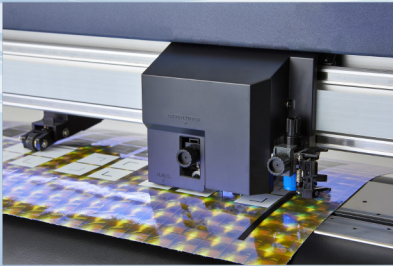
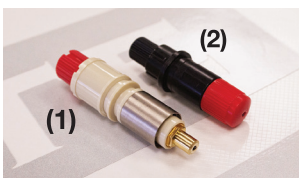


# FC9000 SERIES

## Cut High-Intensity Reflective & Diamond Grade Media



### FC9000 Features Two Blade Holder Options for Effective Cutting



- (1) PHP35-CB15 (brass tip) with recommended CB15UA-K30 Blade
- (2) PHP33-CB15 (ABS red tip) with recommended CB15UA-K30 Blade



#### 3 Step Push Roller Pressure Settings

Two Additional Push Rollers are Required



FC9000-140 (54") shown

- Maximum Tracking Using the Panel Cut Feature
- Ethernet Connectivity and Thumb Drive Port
- New DATALINK Barcode Scanning System
- 8th Gen. Auto Registration Mark Sensor
- Includes Cutting Master 4 - Illustrator & CorelDraw Plug-in



For more information please contact: [cp.sales@graphtecamerica.com](mailto:cp.sales@graphtecamerica.com)



# FC9000 SERIES

**GRAPHTEC**  
Graphtec America, Inc.

## Specifications for Cutting High-Intensity Reflective & Diamond Grade Media

ITEM	FC9000-75	FC9000-100	FC9000-140	FC9000-160
Maximum Cutting Area	30 in x 164 ft (762 mm x 50 m)	42 in x 164 ft (1067 mm x 50 m)	54 in x 164 ft (1372 mm x 50 m)	64 in x 164 ft (1625 mm x 50 m)
Compatible Media Widths	2 in to 36.2 in (50 mm to 919 mm)	2 in to 48.2 in (50 mm to 1224 mm)	2 in to 60.2 in (50 mm to 1529 mm)	2 in to 72.5 in (50 mm to 1841 mm)
Maximum Media Thickness	59.1 mil (1.48 mm)			
Maximum Cut Speed	58.5 in/s (1485 mm/s) at 45° diagonal			
Programmable Cutting Force	20 gf - 600 gf in 48 steps			
Sheet Cutter Max Thickness	11 mil including media release liner (backing)			
Programmable Resolution	GP-GL™: 0.1/.05/.025/.01mm; HP-GL®: 0.001 in (0.025mm); GP-GL™: 254, 508, 1016, 2540; HP-GL®: 1016			
Compatible Media Types	Self-adhesive Vinyl Film, Diamond Grade <sup>(1)</sup> , Fluorescent & Reflective Film Amberlith™, Rubylith™, Sandblast Resist Rubber, High-intensity Reflective Film <sup>(1)</sup> Window Tint Film, Paint Protection Film, Automotive Paint Protection Film			
Interface	USB 2.0 High-speed / Serial RS-232C / Ethernet interface			
ARMS	8th Generation Advanced Registration Mark Sensing System			
Command Modes	GP-GL™, HP-GL® (Selectable in command menu or auto detection)			
Display Panel	3.7" Graphic type LCD with back-light (240dpi x 128dpi), supports 10 languages			
Shipping Weight with Stand	108 lbs (49 kg)	123 lbs (56 kg)	141 lbs (64 kg)	154 lbs (70 kg)
Unit Dimensions with Stand	53 x 45 x 48 in (135 x 114 x 122 cm)	65 x 45 x 48 in (165 x 114 x 122 cm)	77 x 28 x 48 in (196 x 711 x 122 cm)	87 x 45 x 48 in (221 x 114 x 122 cm)
Warranty	3 Years Standard Warranty for Parts & Labor 5 Year Extended Warranty option available for purchase within 90 days			

For more information please contact: [cp.sales@graphtecamerica.com](mailto:cp.sales@graphtecamerica.com)